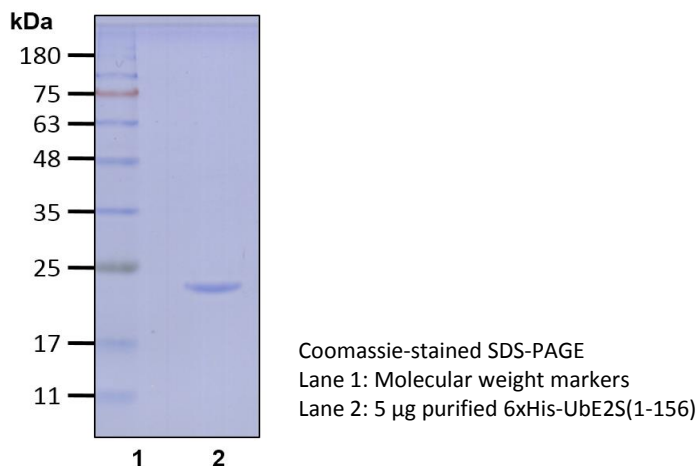


# 6xHis-UbE2S(1-156)

Cat. # C3710, 3711

**Also Known as:** EPF5; E2EPF; E2-EPF  
**NCBI Reference:** NM\_014501.2  
**MW (no tag):** 17.4 kDa  
**Species:** Human  
**Source:** Bacterial recombinant  
**Tag:** 6xHis  
**Stock Buffer:** 20 mM Tris, 150 mM NaCl, 2 mM  $\beta$ ME, 10% Glycerol  
**Concentration:** See tube label  
**Quality Assurance:** ~95% by SDS-PAGE

**Image:**



**Description:** UbE2S is an E2 enzyme, which is part of the E1, E2, and E3 cascade responsible for ubiquitination of protein substrates. UbE2S works with the Ub ligase, anaphase-promoting complex (APC/C), to ubiquitinate proteins like Cyclin B1. UbE2S was found to mediate synthesis of K11-specific polyubiquitin chains. UbE2S(1-156) lacks the C-terminal region of UbE2S, and this truncated version is more efficient than UbE2S in catalyzing synthesis of K11-linked polyubiquitin chains.

**Storage:** Store at -80°C; avoid multiple freeze-thaw cycles

